

The State of Kansas

Total listed Types and Towns: 1008



7.4643 DLR double-line roller



2.4644 long box

The state is normally abbreviated, KANS., unless listed (Ie: KAN., or KS)

The following are illustrations of unusual Types, referenced by the PIC Type Note, in the listings.



1.2214 Coffeyville



2.4156



2.4614 and the same, off paper



long bars

From- Cawker City, Kans. 0.2644

The following are examples of different styles found from Kansas towns, with type numbers.



2.421



2.4214



2.425



2.4254



2.4243



2.4263



2.4653



2.46631



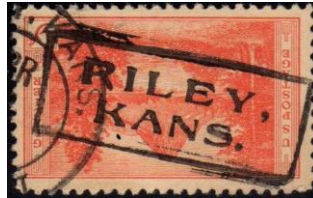
2.4274



2.4284



2.429



2.42931



2.4294



2.4574



2.46004 nara T/S and a sim 2.46



2.463\*3



2.4664



2.4643



2.4674



2.46742 and a heavier impr



2.460005



2.467005



2.46(65/94)



2.466454 and sim, larger



2.466554 and sim, smaller



2.466254

mixed font width



2.515

2.5176

2.529

2.56 and a more modern one



2.625

2.64(5/9)

2.66

2.660005

KS



2.66(4/9)

2.669

2.68(9/5)



4.4272

4.4273

4.4263



4.4254

4.4274

4.42(54/74)



4.5274

4.5643

4.4643



4.4643 long-box roller and another



4.4614



4.4644



4.46(14/62)



no vertical box line

7.4543 SLR single-line roller

KANSAS March 19, 2019

Type	Note	Town	Note	Usage
2.46		ABILENE,		1916, 22, 26, 31
2.460005	CON	ABILENE, / KS		1954
2.46454		ABILENE	CQ	1917
2.4664		ABILENE	CQ	1908, 17
2.64(5/9)		ADMIRE		1943
2.44(5/9)		AGRA		1954
2.4294		AGRA	CQ	1917
2.42741		AGRA,		1950
2.4253		ALBERT,		1963
2.46		ALBERT,		1938
2.46	CON	ALBERT,		1960
4.4274		ALDEN		1926, 29
4.4253		ALEXANDER		1917
1.1254		ALLEN,		1940
0.4662		ALLEN		1917, 22
2.64(55/94)		ALLEN		1938
2.4264		ALMA,		1926
2.42642		ALMA,		1938
2.46	CON	ALMA,		1938, 54
2.46	CON	ALMENA,		1954
2.466		ALMENA,		1931, 32
2.4263		ALTA VISTA,		1938
2.425		ALTAVISTA		1926, 31
2.4293		ALTON,		1938
2.46	CON	ALTON,		1962
2.64(5/9)		ALTON		1938, 54
2.46		ALTOONA		1908
1.1544		AMERICUS,		1938
2.46	CON	AMERICUS,		1961
2.460005		AMERICUS, / KS	CQ	1968
2.467		AMES,		1943, 54
2.467		ANDALE,		1943
2.460005		ANDOVER / KS		1985
1.1562		ANTELOPE,		1959D, 62
2.46		ANTHONY,		1922, 23
2.425		ARGONIA		1917
2.4214		ARKANSAS CITY		1914, 17
2.4663		ARLINGTON		1926
2.467005		ARLINGTON / KS	CQ	1968
1.467		ARMA		1926
2.469		ARMA		1938

2.4154		ASHLAND	CQ	1908
2.46		ASHLAND,		1913, 26, 32
4.4543		ATCHISON,		1917
4.4643		ATCHISON,		1917D, 22
4.46436		ATCHISON		1917
0.4644		ATCHISON	CQ	1917
4.46444		ATCHISON,		1922
4.46141		ATCHISON,		1922, 26, 31, 31D
4.46142		ATCHISON,		1922, 26, 28SD, 30, 31, 32
4.42531		ATCHISON,		1917D, 22
4.4253		ATCHISON		1916, 17, 18, 20, 22, 26, 31, 32
4.42521		ATCHISON,		1917D, 22, 23, 26, 30D, 32
4.4263		ATCHISON		1923
0.4273		ATCHISON	CQ	1938
4.4254		ATHOL		1934
2.4283		ATTICA,		1938
2.4653		ATTICA,		1928SD, 38
2.46		ATTICA,		1926, 32
4.4254		ATWOOD		1932
2.46	CON	AUGUSTA,		1954
2.44(5/9)		AXTELL		1938
2.4674		AXTELL,		1938
2.46	CON	BALA,		1938
1.1644		BALDWIN CITY,		1938, 54
1.166354		BALDWIN CITY,		1954
1.2544		BALDWIN CITY,		1942
2.4614	PIC	BALDWIN CITY, KANS. \\ PARCEL POST		1930
2.4673		BALDWIN CITY	CQ	1926
2.64(5/9)		BALDWIN CITY		1938, 43
2.66		BALDWIN CITY		1912
4.42541		BARNES		1922
2.4664		BARNES		1923
0.4673		BARNES		1926
0.525		BAXTER SPRINGS	CQ	1922
2.461		BAXTER SPRINGS,		1930
2.46	CON	BAZINE,		1962
2.666		BAZINE		1954
1.1563		BEATTIE,		1954
2.46		BEATTIE		1922
1.1644		BEAUMONT,		1961
2.46	CON	BEAUMONT,		1961
0.451		BEAVER		1954

4.4254		BEAVER		1932
1.1664		BELLE PLAINE,		1961
2.4263		BELLEVILLE		1926
2.46		BELLEVILLE	CQ	1917
2.46446		BELLEVILLE	CQ	1954
2.4654		BELLEVILLE,		1928, 38, 39, 45
2.4214		BELLEVILLE,		1926, 33
2.64(5/9)		BELLEVILLE		1931D, 58
2.4674		BELOIT,		1912
2.46	CON	BELPRE,		1926, 38
2.46		BENTON,		1926
2.4657	CON	BERN,		1938
2.460005		BERRYTON, / KS		1954
2.46	CON	BETHEL,		1954
2.64(5/9)	CON	BETHEL		1954
1.4244		BEVERLY		1926
4.4643		BIRD CITY		1922, 23
2.46		BIRD CITY,		1938
2.4663		BIRD CITY,		1938, 42
2.44(5/9)		BIRD CITY		1954
2.460005		BIRD CITY, / KS		1954
4.4254		BIRD CITY		1932, 36
2.4243		BLUE MOUND	CQ	1938
2.465		BLUE MOUND		1926
2.64(5/9)		BLUE MOUND		1954
2.46	CON	BLUE RAPIDS,		1954
2.465		BLUE RAPIDS,		1938, 54
4.46439		BLUE RAPIDS		1923
4.42549		BLUE RAPIDS		1931, 32
2.4613		BONNER SPRINGS,		1926
0.66(13/44)		BONNER SPRINGS		1917
2.66	CON	BONNER SPRINGS	CQ	1938
2.66(1/9)		BONNER SPRINGS		1938, 54
2.66(4/9)		BONNER SPRINGS	CQ	1938
2.64(5/9)		BREWSTER		1954
2.64(5/9)		BROWNELL		1960
4.4254		BROWNELL		1932
1.1173		BUCKLIN,		1954
2.4263		BUCKLIN	CQ	1938
2.4293		BUCKLIN		1932
4.42549		BUCKLIN		1925
2.46		BUCKLIN		1926, 31
2.4644		BUCKLIN,		1938

2.465		BUCKLIN,	1917
2.4653		BUCKLIN,	1938
2.4293		BUHLER,	1938
2.669		BUHLER	1938
2.66		BUHLER	1954
2.460005		BUNKER HILL / KS	CQ 1968
1.1663		BURDEN,	1938, 40
1.1644		BURDETT,	1954
2.425		BURDETT,	1926
2.46	CON	BURDETT,	1938
4.4254		BURLINGAME	1923
4.4294		BURLINGAME	1922, 32
4.4644		BURLINGAME	1926
2.461		BURLINGTON,	1913
4.4613		BURLINGTON	1917, 26
4.46134		BURLINGTON,	1927
2.5254		BURLINGTON	1918
2.6644		BURLINGTON	1917
2.44(5/9)		BURNS	1954
2.467005		BURNS,	1968
4.4643		BURNS	1923, 26, 32
4.46434		BURNS	1926
4.4254		BURR OAK	1926
2.46		BURR OAK	1931
2.460005		BURR OAK / KS	CQ 1968
2.4293		BURRTON	1926, 31, 32
4.4254		BUSHTON	1922
2.46	CON	BUSHTON,	1954
2.460005		BUSHTON, / KS	1968
2.64(5/9)		BUSHTON	1938, 56, 58
2.467005		CALDWELL, / KS	1967
2.46	CON	CANTON,	1938, 54
2.4664		CANTON	1922
2.467		CANTON	CQ 1954
2.4243		CAWKER CITY	1931
0.2644	PIC	CAWKER CITY,	1932
1.2154		CEDAR VALE	1917
2.421		CEDAR VALE	1926, 32
2.425		CEDAR VALE	1917
4.4294		CEDAR VALE	1923
2.4544		CEDAR VALE,	1938, 40
2.46	CON	CEDAR VALE,	1954
2.46631		CEDAR VALE	1925, 26, 32, 34



2.64(5/9)		CEDAR VALE	CQ	1954
2.64(5/9)		CENTERVIEW(VILLE)	CQ	1938, 45
1.2654		CHANUTE,		1917
2.466		CHASE,		1926
2.465		CHENEY,		1914, 17
2.467005		CHENEY, / KS		1983
2.4574		CHENEY,		1954
4.4254		CHENEY		1922
4.42(54/74)		CHENEY		1926
4.4644		CHENEY		1926, 31, 38, 45
1.1613		CHEROKEE,		1926
2.46		CHEROKEE,		1938
2.4663		CHEROKEE,		1932
2.4243		CHERRYVALE	CQ	1938
2.425		CHERRYVALE,		1923, 31, 32
2.4663		CHERRYVALE,		1932
2.64(5/9)		CHERRYVALE		1938
2.66		CHERRYVALE		1914
2.46		CHETOPA,		1932
1.2173		CIMARRON,		1938
1.2182		CIMARRON,		1938
4.4254		CLAFLIN		1921, 22, 26
4.4644		CLAFLIN		1926, 31, 32, 38
2.46		CLAY CENTER,		1954
2.66		CLAY CENTER	CQ	1914
2.46		CLAYTON		1926
7.4643		CLAYTON		1922
2.46449		CLEARWATER		1938, 54
4.4673		CLIFTON		1938, 40
2.4294		CLYDE		1922, 26, 32
2.46		COATS		1929
2.467		COATS,		1963
2.5294		COATS		1922
1.165		COFFEYVILLE,		1911D, 14D
1.2214	PIC	COFFEYVILLE,		1911D, 14D
2.66		COFFEYVILLE		1908
2.4214		COFFEYVILLE		1912
2.4293		COLBY,		1926, 31, 38
2.4294		COLBY,		1927, 38
2.466		COLBY		1917D, 31
2.559		COLDWATER		1931
2.46		COLLYER,		1926, 38
2.4662		COLLYER		1926

2.46		COLUMBUS		1926, 31
2.4653		COLUMBUS,		1938
1.255		COLWICH,		1938
2.4644		COLWICH,		1954, 63
2.4646		COLWICH	CQ	1938
2.460005		CONCORDIA, / KS		1971
4.4614		CONCORDIA		1926, 29, 32
2.460005		CONWAY SPRINGS / KS		1968
2.460005	VAR	CONWAY SPRINGS / KS		1975
2.4613		COTTONWOOD FALLS,		1926
2.421		COUNCIL GROVE		1917
2.4214		COUNCIL GROVE,		1926, 38, 43
2.4614		COUNCIL GROVE		1931, 38
2.4613		COTTONWOOD FALLS		1926
2.4243		COURTLAND		1930
2.4254		COURTLAND		1922
2.461		COURTLAND		1917
2.4293		CUBA	CQ	1926, 32
2.466454		CUBA,		1938
4.4643		CULLISON	CQ	1922
1.1644		DEARING,		1968
2.46		DEERFIELD,		1938
2.46	CON	DEERFIELD,		1955
2.4653		DEERFIELD,		1938, 48
2.4664		DELIA,		1932
2.425		DELPHOS,		1926
2.6664		DELPHOS		1938
2.46		DENISON,		1912, 14, 15
1.1644		DENNIS,		1954, 59
2.460005		DENTON, / KS		1978
1.2253		DERBY,		1938
2.46	CON	DERBY,		1954
1.2163		DE SOTO,		1922
7.4643		DEXTER		1932
2.46		DIGHTON	CQ	1938, 40
2.466454		DIGHTON,		1954
2.4214		DODGE CITY		1926, 31, 32
2.461		DODGE CITY,		1914
2.46		DODGE CITY		1917
2.4663		DODGE CITY		1922, 26, 30
2.5296		DODGE CITY		1917, 22, 23
0.4293		DOUGLAS		1938
2.46		DOWNS,		1954

2.4653		DOWNS,		1938
4.4643		DOWNS		1931
2.4664		DOWNS		1922, 26, 32
1.4514		DURHAM,		1936, 37, 40
2.4263		DURHAM	CQ	1926
2.46		DURHAM		1917, 17D, 17DOC, 22-23, 26, 29-32
2.46	CON	DURHAM	CQ	1954
2.5664		DURHAM	CQ	1938
2.466454		DWIGHT,		1953
2.64(5/9)		DWIGHT		1954
2.625		ENGLEWOOD		1938
1.1644		EARLTON,		1938, 59
2.46	CON	EDNA,		1961
2.4664		ELBING,		1926
2.660005		EL DORADO, / KS		1959D, 71
2.4644		ELGIN,		1954
2.425		ELK CITY,		1917
2.5664		ELK CITY		1922
1.1673		ELKHART,		1948
2.5664		ELKHART	CQ	1938
4.4154		ELKHART		1922, 26
2.465		ELLINWOOD,		1926, 31, 40, 41
2.4293		ELLIS,		1931, 39, 40
2.46	CON	ELLIS,		1938
2.4674		ELLIS,		1913, 22, 26, 32, 34
1.45		ELLSWORTH,		1923
2.4214		ELLSWORTH,		1926, 31, 32, 37
2.4263		ELLSWORTH		1926, 38
2.4653		ELLSWORTH,		1945
2.465		ELSMORE,		1917
2.46		EMMETT	CQ	1926, 32
2.46	CON	EMMETT,		1964
4.4253		EMPORIA		1922, 26, 28SD, 29, 30, 31, 32, 34
4.4644		EMPORIA		1922, 26, 32
2.625		EMPORIA		1954
4.42(54/94)		ENGLEWOOD		1925SD
1.4154		ENTERPRISE,		1938
2.4293		ERIE,		1938
2.4157	PIC	ERIE		1938, 54
2.46		ERIE,		1922, 26, 29
2.429		EUDORA		1917
2.4664		EUDORA		1926
2.425		EUREKA,		1922

4.4293		EUREKA		1932
2.46		EUREKA,		1922
2.46	CON	EVEREST,		1954
2.460005		EVEREST, / KS		1984
2.46	CON	FAIRVIEW,		1954
1.1644		FALUN,		1954
2.460005		FALUN, / KS		1983
2.465		FALL RIVER,		1938
4.4294		FLORENCE		1922, 32
2.4263		FLORENCE,		1931D
2.467005		FORD, / KS		1968
2.465		FORMOSO		1932
2.46	CON	FORT DODGE	CQ	1938
2.4644		FORT DODGE	CQ	1961
1.2544		FORT LEAVENWORTH	CQ	1926
2.4613		FORT LEAVENWORTH	FT	1926
2.461		FORT LEAVENWORTH, / KS		1954
2.664405		FORT LEAVENWORTH, / KS		1968
2.46534		FORT LEAVENWORTH	CQ	1954
2.5214		FORT LEAVENWORTH	CQ	1922, 31
2.525		FORT LEAVENWORTH	CQ	1917, 26, 32
2.5644		FORT LEAVENWORTH	FT	1908
2.6214		FORT LEAVENWORTH		1926, 30, 31, 32
2.4654		FORT RILEY,		1922
2.4294		FOWLER,		1926
2.460005		FOWLER, / KS		1979
1.46	CON	FRANKFORT		1938
2.46		FRANKFORT,		1932
2.466255		FRANKFORT, / KS		1954
2.46		FREDONIA	CQ	1912
2.46		FULTON,		1908
2.460005		GALENA, / KS		1971
4.4154		GALESBURG		1921
4.4254		GALESBURG		1932
4.4644		GALESBURG		1923
2.46		GALESBURG		1930
2.4644		GALESBURG		1917
2.4663		GALESBURG		1932
2.625		GALESBURG		1938
2.460005		GALVA, / KS		1963
2.461		GARDEN PLAIN		1917
2.5214		GARDEN PLAIN		1914, 26
4.4253		GARDNER		1921, 23

1.46		GARNETT	CQ	1918
2.46		GARNETT,		1917, 22, 26, 31
2.46	VAR	GARNETT	CQ	1931
2.4644		GARNETT,		1954
2.4652		GARNETT,		1958
2.4664		GARNETT		1938, 43
2.425		GAYLORD,		1938
2.5664		GAYLORD	CQ	1938
1.1644		GEM,		1956
2.4254		GENESEO		1932
2.4644		GENESEO,		1926
2.46	CON	GLASCO,		1954
2.4664		GLASCO,		1926, 31
2.466454		GLASCO,		1938, 51
1.1644		GLEN ELDER,		1938
2.42931		GOFF,		1926
2.4664		GORHAM		1923
2.4263		GRAINFIELD	CQ	1926
1.1643		GRANTVILLE, KAN		1954, 62
4.42(13/53)		GREAT BEND		1917
2.46		GREELEY,		1922BH, 23, 26
2.4614		GREELEY		1922BH
2.466454		GREEN,		1954
4.46434		GREENLEAF		1926, 32
2.6664		GREENLEAF	CQ	1938
2.46	CON	GREENSBURG,		1960
2.460005		GREENSBURG, / KS		1977
7.4642	DLR	GREENSBURG		1917SD, 40
2.46	CON	GRENOLA,		1954
2.46		GRIDLEY	CQ	1926
2.460005		GRIDLEY, / KS		1977
2.64(5/9)		GRIDLEY		1962
2.4653		GRINNELL,		1938
2.625		GRINNELL,		1954
2.669		GRINNELL	CQ	1938
2.4263		GYPSUM,		1926, 30, 38, 40
2.46	CON	GYPSUM,		1963
2.467005		GYPSUM, / KS		1968
2.6664		GYPSUM		1943
2.4644		HADDAM,		1934
2.425		HALSTEAD,		1922
2.46451		HALSTEAD,		1926, 31, 32
2.465		HALSTEAD		1917, 26, 40

2.625		HALSTEAD		1954, 58, 59D
2.6694		HALSTEAD		1938
2.465		HAMILTON,		1926, 38
2.4663		HAMILTON		1929
1.4154		HANOVER	CQ	1917
4.4254		HANOVER		1931D
2.4263		HANOVER,		1926, 32, 40
2.4173		HANOVER		1938
2.46		HANSTON,		1938
2.6664		HARDTNER		1938
2.46		HARPER,		1925
2.46	CON	HARPER,		1954
2.4653		HARPER,		1938
2.4664		HARPER		1926
2.46	CON	HARTFORD,		1954
2.460005		HAVEN, / KS		1954
2.46449		HAVEN,		1954
2.4214		HAVENSVILLE,		1923
1.1643		HAVILAND,		1938
2.466454		HAVILAND,		1938
0.4663		HAVILAND	CQ	1927
2.4264		HAYS,		1926, 29, 30, 31, 32, 38
2.44(5/9)		HAYS		1953, 54
2.46	CON	HAYS,		1931D, 38, 54
2.4664		HAYS	CQ	1926, 38
2.46(65/94)		HAYS		1938
2.64(5/9)		HAYSVILLE		1954
2.465	CON	HAZELTON		1931
1.1513		HEPLER,		1938, 43
1.4643		HEPLER,		1938, 54
2.4644		HERINGTON,		1912
2.4663		HERNDON		1926
2.46	CON	HESSTON,		1954
2.465		HESSTON,		1917
2.4653		HESSTON,		1938
2.4673		HESSTON,		1938, 54
2.4673		HIAWATHA		1912, 13
2.4263		HIGHLAND		1926, 32, 38
2.46		HIGHLAND	CQ	1938
1.2242		HILLSBORO,		1917
2.41536		HILLSBORO	CQ	1938
2.4193		HILLSBORO		1940
2.46		HILLSBORO		1922

2.460005		HILLSBORO, / KS		1979
4.4613		HOISINGTON		1926, 29
2.4663		HOISINGTON		1931D, 32
2.68(9/5)		HOLTON		1954
2.46	CON	HOLTON,		1954
2.4664		HOLTON		1917
2.460005		HOLTON, / KS		1954
2.6694		HOLYROOD		1938
4.42(54/74)		HOLYROOD		1916SE, 26
1.1543		HOPE,		1945
1.16		HOPE,		1938
4.4274		HOPE		1926, 32
4.4644		HOPE		1931
1.2143		HORACE,		1917, 17D
2.46		HORTON		1929, 31
2.46	CON	HORTON,		1938, 54
2.4664		HORTON		1931
2.4653		HORTON,		1938
2.46	CON	HOWARD	CQ	1954
0.4644		HOWARD	CQ	1926, 32
2.4644		HOWARD,		1959D, 61
2.469		HOWARD		1926
1.4254		HOXIE,		1938
1.165	CON	HOXIE,		1954
2.4264		HOXIE,		1926, 32
2.4284		HOXIE,		1914
2.4293		HOXIE	CQ	1940
2.46		HOXIE,		1922
2.46	CON	HOXIE,		1954, 61
2.460005		HOXIE, / KS		1982
2.6664		HUGOTON		1938
4.4154		HUGOTON		1926, 31, 32
4.4644		HUGOTON	CQ	1931D
1.527345		HUMBOLDT, / KS		1977
1.1152		HUNTER,		1938
1.1543		HUNTER,		1938
2.46		HUNTER		1926
4.4643		HUTCHISON,		1923, 26
4.46434		HUTCHISON,		1922
2.4214		INDEPENDENCE		1914, 17
2.45143		INDEPENDENCE,		1917
1.1543		INGALLS,		1938
2.460005		INGALLS, / KS		1967

2.46	CON	INMAN,	1938, 52
2.625		INMAN	1954, 59D
1.1663		IONIA,	1938
4.4154		IRVING	1926
2.46	CON	ISABEL,	1938
2.46	CON	IUKA,	1954
4.4254		JENNINGS	1922
2.4293		JETMORE	CQ 1926
2.46	CON	JETMORE,	1954
2.4653		JETMORE,	1938
2.4673		JETMORE	CQ 1926, 38
2.425		JEWELL	1938
2.46		JEWELL,	1926, 29
2.46	CON	JEWELL,	1954
2.4664		JEWELL,	1917, 22, 38
2.425		JOHNSON	1926, 54
4.4254		JOHNSON	1930
2.4652		JOHNSON	CQ 1954
4.4612		JUNCTION CITY	1923
2.460005		JUNCTION CITY, / KS	1954
2.5643		JUNCTION CITY,	1917D
2.5644		JUNCTION CITY	1908
2.64(5/9)		JUNCTION CITY	1954
4.4254		KANOPOLIS	1922, 32
2.46		KANOPOLIS,	1926
2.46631		KANORADO	CQ 1926, 31
2.460005		KANORADO, / KS	1968
4.4513		KANSAS CITY	1932
4.5644		KANSAS CITY,	1923
4.4613		KANSAS CITY,	1926, 27, 31, 32, 38
4.46144		KANSAS CITY,	1917, 22, 23
2.4563		KANSAS CITY	CQ 1954
2.4634		KANSAS CITY	1908
2.66		KANSAS CITY	1913
4.4214		KANSAS CITY,	1918, 22
1.1644		KEATS,	1938
0.4214		KENSINGTON	CQ 1929
2.46	CON	KINCAID,	1964
2.625		KINGMAN	1954
2.46		KINSLEY,	1913, 31
2.46	CON	KINSLEY,	1954
2.4694		KINSLEY	1913, 38
4.4254		KIOWA	1926



2.4264		KIOWA,	1926, 38
2.4644		KIOWA,	1938
2.4664		KIOWA,	1926, 31, 32
4.4644		KIOWA	1926, 31, 38
2.460005		KIOWA, / KS	1978
2.4674		KIRWIN	CQ 1926
2.46		LA CROSSE,	1926
2.4663		LA CROSSE,	1926
2.46		LA CYGNE	CQ 1926
2.4663		LA CYGNE	CQ 1931
2.625		LA CYGNE	1954
2.669		LA CYGNE	CQ 1938
2.46	CON	LANE,	1938, 54
1.1262		LANSING, KAS.	1909
1.1544		LANSING,	1938
2.4263		LANSING,	1926
2.467		LATHAM,	1959
4.4614		LAWRENCE	1917D, 22, 26, 29, 32
1.1614	ASA	LAWRENCEBURG,	1940
1.1644		LAWTON,	1957
2.46	CON	LAWTON,	1949A
1.1583		LEBO,	1938
2.46642		LEBO	1917
1.46(73/62)		LEHIGH,	1922
2.460005		LEHIGH, / KS	1979
2.46		LENEXA	CQ 1922
2.465		LENORA,	1928, 38
2.4664		LENORA,	1937
2.4694		LEON	1938
2.42141		LEONARDVILLE	CQ 1926
2.64(5/9)		LEONARDVILLE	1938, 54
2.46	CON	LEOTI,	1938
2.46		LE ROY,	1922, 26
2.64(5/9)		LE ROY	1931D, 54
2.46	CON	LEWIS,	1958
2.4653		LEWIS,	1938, 54, 57
2.460005		LINCOLN, / KS	1968
4.4254		LINCOLN	1922, 32
4.4294		LINCOLN	1932
2.4214		LINCOLNVILLE,	1929
4.4643		LINCOLNVILLE	CQ 1922, 26
2.515		LINDBORG,	1922
2.46		LINDBORG	1908, 15

2.46	CON	LINDSBORG	CQ	1954
2.4663		LINDSBORG,		1926, 30, 31D, 38, 40
2.64(5/9)		LINDSBORG		1938, 55
2.669		LINDSBORG		1938
2.6664		LINDSBORG		1938, 48
2.42941		LINN,		1922
2.4264		LINN,		1928SD, 34
2.4664		LINN		1939
2.4214		LITTLE RIVER	CQ	1914, 26
2.425		LITTLE RIVER,		1922
2.64(5/9)		LONG ISLAND		1954
2.4263		LONGTON	CQ	1938
2.465		LOUISBURG	CQ	1938
2.4663		LOUISBURG,		1931
2.669		LOUISBURG	CQ	1938
2.46		LURAY,		1923
2.4664		LURAY,		1913
2.4664		LYNDON		1917
2.4283		LYONS	CQ	1926, 31
2.4674		LYONS,		1913, 14, 26
2.45436		MACKSVILLE		1938, 54
0.4644		MACKSVILLE	CQ	1938
2.42		MACKSVILLE	CQ	1938
2.4254		MACKSVILLE		1914
2.467005		MACKSVILLE, / KS		1968
4.4644		MACKSVILLE	CQ	1931
4.4293		MADISON		1926, 38
2.46		MADISON,		1938
2.46	CON	MADISON,		1961
2.669		MADISON		1938, 43
2.465		MAHASKA,		1938
2.64(5/9)		MAHASKA		1938
2.46	CON	MAIZE,		1954
2.4654		MANHATTAN		1914
4.4613		MANHATTAN		1923, 26, 29, 32
2.46452		MANTER	CQ	1929
2.4254		MARQUETTE		1917
2.46	CON	MARQUETTE,		1938, 54
2.4654		MARQUETTE	CQ	1938
2.4644		MARYSVILLE,		1914
2.465		MCCRACKEN,		1938
4.4643		MCCRACKEN	SMc	1918, 22
2.4653		MC CUNE,		1938

2.46		MCCUNE,	SMc	1922, 26, 32, 38
2.64(5/9)		MCCUNE		1954
2.4663		MCDONALD,	SMc	1926, 31
2.4653		MCDONALD,		1938, 54
2.46	CON	MCLOUTH,	SMc	1954
1.1663		MCPHERSON	SMc	1917D
2.46	CON	MEADE,		1954
4.42(54/74)		MEADE		1926
4.4643		MEADE		1917, 22
2.4214		MEDICINE LODGE,		1918
2.461		MEDICINE LODGE	CQ	1923, 26
2.4643		MEDICINE LODGE	CQ	1926, 31
2.5214		MEDICINE LODGE		1914
4.4254		MERIDEN		1926, 37
2.46		MERRIAM	CQ	1926, 38
4.4644		MERRIAM	CQ	1931
2.46		MILFORD,		1922, 29, 31
2.4214		MILTONVALE	CQ	1926
1.2643		MINEOLA,		1940
2.46	CON	MINEOLA,		1938
2.4214		MINNEAPOLIS,		1917, 26, 28SD, 30, 34
2.46	CON	MINNEAPOLIS		1938
2.460005		MINNEAPOLIS, / KS		1977, 80
2.46	CON	MISSION,		1938
2.466554		MISSION,		1931D, 38
2.625		MOLINE		1954
4.4254		MOLINE		1922, 23
4.4294		MOLINE		1926
4.4644		MOLINE		1926, 31, 38, 40
2.4293		MORAN	CQ	1938
2.46		MORAN,		1938
2.46	CON	MORAN,		1954
0.4664		MORAN	CQ	1938
2.46		MORRILL,		1938
2.465		MORRILL,		1926, 38
2.68(54/55)		MORRILL		1938
4.5294		MORROWVILLE		1926, 32
2.625		MOUNDRIDGE	CQ	1938
2.4243		MOUNDRIDGE,		1938, 39, 40, 43
1.1544		MOUNT HOPE,		1954
2.42141		MOUNT HOPE,		1932
2.4243		MOUNT HOPE,		1931D, 38
2.46	CON	MOUNT HOPE	CQ	1954

2.4652		MOUNT HOPE	CQ	1938
2.625		MOUNT HOPE		1954
7.4642		MULBERRY		1947A
1.2162		MULLINVILLE,		1954, 58
1.1544		MULVANE,		1962
2.465		MULVANE		1917
2.46	CON	MUNDEN	CQ	1938
2.625		MUNDEN		1938
2.46	CON	MURDOCK,		1954
2.4664		NARKA,		1917, 31, 54
2.625		NASHVILLE		1959
1.1644		NEKOMA,		1938, 41, 54
1.2542		NEKOMA,		1938, 40, 54
1.215401		NEKOMA,		1938
2.46		NESS CITY	CQ	1926
2.460005		NESS CITY, / KS		1968, 77
2.46		NETAWAKA	CQ	1954
1.1644		NEWMAN,		1962
1.1252		NEWTON,		1924, 25
1.2644		NEWTON,		1923
1.264401		NEWTON,		1922
4.46441		NEWTON		1922, 26, 32
4.4643		NEWTON,		1919, 22, 23, 25D
4.4253		NEWTON		1922, 26
1.4253		NICKERSON,		1938
2.46		NICKERSON,		1922, 26, 32
2.4663		NICKERSON,		1931, 42
1.1644		NIOTAZE,		1963
2.4263		NORCATUR	CQ	1938, 40
2.625		NORTH NEWTON		1940
2.425		NORTON		1953
2.46		NORTON,		1938
2.625		NORTON		1938, 54
2.4214		NORTONVILLE	CQ	1938
2.425		NORTONVILLE	CQ	1926
2.461		NORTONVILLE	CQ	1922
2.56		NORTONVILLE		1917
2.66		NORTONVILLE,		1908
2.46	CON	NORWICH,		1954
1.2562		OAKLEY,		1926
2.425		OAKLEY		1954
2.4293		OAKLEY,		1926
2.46		OAKLEY,		1926, 31, 32, 33

2.625		OAKLEY		1931D
2.4664		OAKLEY,		1937, 40
2.625		OAKLEY		1954, 60
2.68(9/5)		OAKLEY		1938, 43
2.4664		OBERLIN		1917, 26
1.265401		OCHELTREE,		1938
2.46		OFFERLE,		1926, 31
2.625		OFFERLE		1938, 54
1.1284		OLATHE,		1926
1.1663		OLATHE,		1917, 22, 26
1.5543		OLATHE,		1908, 12
4.4273		OLATHE,		1922, 23, 26
4.4643	CON	OLATHE,		1922
4.4643		OLATHE,		1922, 23, 32
4.4644		OLATHE		1926, 31, 31D, 32, 33
2.46	CON	OLMITZ,		1938, 54, 61
2.46	CON,VAR	OLMITZ,		1938, 54, 61, 63, 68
0.42532		OLPE	CQ	1917
2.4294		OLPE,		1931, 32
2.46		OLPE,		1938
2.467		OLPE,		1954
2.46742		OLPE,		1913
2.46		ONEIDA,		1965
2.5644		OSAWATOMIE	CQ	1954
2.625		OSAWATOMIE		1954
2.64(5/9)		OSAWATOMIE		1938
2.46		OSBORNE	CQ	1926
2.46	CON	OSBORNE,		1954
2.46452		OSBORNE	CQ	1926
2.4656		OSBORNE,		1913
2.4214		OSKALOOSA	CQ	1932
2.425		OSKALOOSA	CQ	1930, 31, 38
2.669		OSKALOOSA	CQ	1938
2.46		OSWEGO	CQ	1908
2.46	CON	OSWEGO,		1954
0.46444		OSWEGO,		1922, 31
2.4664		OSWEGO		1917
1.2123		OTIS,		1926, 40, 43
2.429		OTIS,		1931
2.4293		OTIS,		1938
2.64(5/9)		OVERBROOK		1954
2.46	CON	OVERLAND / PARK, KANS.		1954
2.4662		OVERLAND PARK,		1954

2.56		OVERLAND PARK,		1954
2.68(1/5)		OVERLAND PARK		1938, 54
2.469		OXFORD		1931D
2.46	CON	OXFORD,		1931D
2.4653		OXFORD,		1938
2.466454		OXFORD,		1931D, 53
2.4694		OXFORD		1954
2.669		OXFORD		1931D
1.127		OZAWKIE,		1943
2.46	CON	PAGE CITY,		1954
2.460005		PALCO, / KS		1968
2.4674		PALMER,		1922, 32
2.4263		PAOLA		1932
2.46	CON	PAOLA,		1954
2.460005		PAOLA, / KS		1968
4.4253		PAOLA		1926, 28
4.4643		PAOLA,		1926
2.46	CON	PARKER,		1938
1.466205		PARTRIDGE, / KS.		1963
2.64(5/9)		PAWNEE ROCK		1954
2.4694		PAXICO,		1926
2.666		PAXICO		1963
2.46		PEABODY,		1912
2.46	CON	PEABODY,		1954
2.4664		PEABODY		1917
2.460005		PERU, / KS		1983
2.460005		PFEIFER, / KS		1968, 72
1.4574		PHILLIPSBURG		1931
2.4214		PHILLIPSBURG	CQ	1926
2.4243		PHILLIPSBURG,		1931, 32, 34, 36, 38
2.46	CON	PHILLIPSBURG		1938
2.46006		PHILLIPSBURG	CQ	1954
2.4653		PHILLIPSBURG,		1926, 32
2.467005		PHILLIPSBURG, / KS		1967
2.56		PHILLIPSBURG		1938
2.425		PIEDMONT,		1922
2.46		PIEDMONT,		1912
4.4614		PITTSBURG		1926
2.46	CON	PLAINS,		1938
4.4254		PLAINS		1932
2.46	CON	PLAINVILLE,		1954
2.461		PLAINVILLE		1932
2.465		PLAINVILLE	CQ	1931, 38

2.4663		PLAINVILLE,		1926
2.466454		PLAINVILLE,		1938
2.625		PLAINVILLE		1938, 54, 60
2.625		PLEASANTON		1938
0.46		PLEVNA,		1913
2.46	CON	POMONA,		1938, 54
2.4664		POMONA,		1923, 26
2.46632		POMONA	CQ	1938
2.4263		POTWIN,		1938, 40
2.6*6		POTWIN,		1922, 26, 32
1.2543		PRAIRIE VILLAGE,		1938, 56
2.4664		PRATT,		1908
2.460005		PRATT, / KS		1968
1.154301		PRESCOTT,		1938
2.46		PRESTON	CQ	1929, 32
2.46	CON	QUENEMO,		1954
7.4642	DLR	QUINTER		1922, 26, 29, 34, 38
1.1663		RAMONA,		1926, 38
2.460005		RANDALL, / KS		1969
2.465		RANDOLPH	CQ	1932
2.46	CON	RANSOM,		1938
2.460005		RANSOM, / KS		1968
2.46		RANTOUL,		1926
1.1543		REPUBLIC,		1954, 62
2.46		REPUBLIC	CQ	1926
1.4174		REXFORD	CQ	1938
2.4263		REXFORD,		1926, 38, 40
1.1682		RICHFIELD,		1938
2.46		RICHMOND,		1946
2.42931		RILEY,		1934
0.46	CON	RILEY,		1963
2.460005	CON	RILEY, / KS		1977
2.625		RILEY		1954
2.467		ROLLA,		1954
2.625		ROLLA		1958
2.46		ROXBURY,		1948
2.4293		RUSSELL	CQ	1926
2.46		RUSSELL,		1926, 32
2.46	CON	RUSSELL		1938, 54
2.4644		RUSSELL,		1938
1.25		SABETHA,		1931D
2.46		SABETHA		1912
0.4613		SABETHA,		1922, 23

4.42531		SABETHA	CQ	1906
2.460005		SAINT FRANCIS, / KS	ST	1961
2.68(1/5)		SAINT GEORGE		1961
1.1563		SAINT JOHN,		1954
2.44(14/45)		SAINT JOHN,		1926, 31
2.460005		SAINT JOHN, / KS	ST	1968
2.4214		SAINT MARYS,		1931D
7.4642	DLR	SAINT MARYS		1917, 17D, 22
2.66		SAINT PAUL		1917, 22
2.669		SAINT PAUL	CQ	1943
1.4653		SALINA		1926
4.4273		SALINA		1918, 22, 23, 26, 29, 30, 32
2.4644		SALINA		1917, 21
4.4643		SALINA,		1922
2.46		SATANTA	CQ	1931, 32
2.460005	CON	SAWYER, / KS		1977
2.46	CON	SCAMMON,		1943
2.68(9/5)		SCANDIA		1943
2.4214		SCOTT CITY,		1922, 31
2.46		SCOTT CITY,		1954
2.4654		SCOTT CITY,		1938
4.4643		SCOTT CITY	CQ	1926
2.64(5/9)		SCOTT CITY		1938
2.46		SEDAN,		1926, 32, 38
2.4664		SEDAN	CQ	1926
2.46		SEDGWICK,		1917
2.44(5/9)		SELDEN	CQ	1938
2.46		SELDEN		1917
4.4254		SELDEN		1932
1.460038		SENECA, KS		1967
2.46	CON	SENECA,		1954
4.4254		SEVERANCE		1922
1.1543		SEVERY,		1954
2.4664		SEVERY		1940
2.46	CON	SHARON,		1938, 54, 59D
2.461		SHARON SPRINGS	CQ	1926
2.5644		SHARON SPRINGS		1954
2.4663		SHAWNEE	CQ	1931
1.1543		SHIELDS,		1938
1.1644		SHIELDS,		1938
1.417408		SHIELDS,		1954
4.4274		SOLDIER		1922, 26
4.4644		SOLDIER		1931



2.46	CON	SOLOMON,		1964
2.465		SOLOMON	CQ	1926
2.46632		SOLOMON,		1938
2.4214		SOUTH HAVEN,		1912, 26, 31, 38
2.4643		SPRING HILL,		1914
2.460005		SPRING HILL / KS	CQ	1974
2.46	CON	STAFFORD,		1951
2.4663		STAFFORD,		1926, 31D, 37
2.64(5/9)		STAFFORD		1954
2.6664		STAFFORD		1938
4.4253		STERLING		1917, 22
4.4254		STERLING		1926
4.46(14/62)		STERLING		1917, 17D, 22, 23, 26, 31
2.46		STOCKTON,		1926, 40
2.425454		STRONG	CQ	1914
2.4664		STRONG		1938
2.466454		STRONG CITY,		1938
2.46451		SUBLETTE	CQ	1926
2.4663		SUBLETTE	CQ	1926, 31
2.4653		SUBLETTE,		1938
2.460005		SUBLETTE, / KS		1966
2.4243		SUMMERFIELD	CQ	1931
1.465		SUN CITY,		1938
2.4574		SYLVAN GROVE,		1926, 38
1.1284		SYLVIA,		1942, 54
1.1644		SYLVIA,		1954, 63
2.428		SYLVIA,		1926
2.46	CON	SYLVIA,		1938
2.4263		SYRACUSE,		1926
2.46	CON	TALMAGE	CQ	1975
2.467005		TESCOTT, / KS		1984
1.1153		TIMKEN,		1938
2.46006		TIMKEN,		1938
2.466		TIPTON	CQ	1926
1.45408		TONGANOXIE, KANSAS		1985
2.4254		TONGANOXIE	CQ	1932
2.4214		TONGANOXIE,		1926, 29
2.4653		TONGANOXIE	CQ	1926
2.66552		TONGANOXIE		1938
4.4253		TOPEKA		1922, 23, 26, 28-32
4.4254		TOPEKA	CQ	1923, 26, 32, 61
4.42931		TOPEKA		1922, 25D, 26,
4.46434		TOPEKA,		1917, 17D, 19

4.4643		TOPEKA,		1917, 17D, 22, 23, 26
4.46441		TOPEKA,		1917, 17D, 22, 23, 26, 29, 30, 32
4.46444		TOPEKA,		1922
2.46		TORONTO	CQ	1938
2.4663		TORONTO,		1938
2.6664		TORONTO		1938, 40
2.46	CON	TOWANDA,		1960
2.465		TOWANDA,		1938
1.4544		TRIBUNE		1928SD
2.4653		TRIBUNE,		1938, 43
2.4263		TRIBUNE,		1926, 38, 40
4.4254		TROY		1926, 32
4.4294		TROY		1932
4.4544		TROY		1926
2.46	CON	TROY,		1931D, 38, 54
2.4694		TROY		1938
2.4293		TURON,		1926, 32
2.48(9/5)		TURON		1956
2.6664		TURON		1938
2.46	CON	TYRO,		1965
1.1676		UDALL,		1954
2.4284		UDALL	CQ	1917
2.467		UDALL,		1954
2.469		UDALL	CQ	1938
2.46		ULYSSES	CQ	1926, 31
2.46	CON	ULYSSES,		1938, 54
2.4614		VALLEY CENTER	CQ	1938
2.56		VALLEY CENTER,		1954
4.4643		VALLEY FALLS		1917, 26, 30, 31, 31D, 38
4.4543		VETERANS ADMINISTRATION / HOME,		1932
2.46	CON	VICTORIA,		1954
2.460005		VICTORIA, / KS		1975
4.4644		WA KEENEY	CQ	1932
2.425		WAKEENEY,		1926
4.4254		WAKEENEY		1923, 26, 32
2.46	CON	WAKEENEY,		1961
2.460005		WAKEENEY, / KS		1968
2.625		WAKEENEY	LGK	1938, 54
2.4214		WAKEFIELD	CQ	1926
2.456354		WAKEFIELD		1954
2.46		WALNUT	CQ	1917, 38
2.4664		WALNUT,		1923, 26

1.1262		WAMEGO, KAN.		1917
1.1543		WAMEGO,		1926, 54
1.1663		WAMEGO,		1922
2.4214		WASHINGTON,		1916, 17, 26, 31, 32
2.4254		WASHINGTON,		1940
2.46		WASHINGTON,		1923
2.4653		WASHINGTON,		1938
1.1544		WATERVILLE,		1917
1.2243		WATERVILLE,		1959D
2.421		WATERVILLE	CQ	1922
2.46	CON	WATERVILLE,		1954
2.4614		WATERVILLE	CQ	1938
4.4254		WATERVILLE		1922, 29
4.4294		WATERVILLE		1926
4.4644		WATERVILLE		1930
0.4254		WATHENA	CQ	1922
1.1554		WAVERLY		1954
2.46	CON	WAVERLY,		1954
2.4653		WAVERLY,		1938
2.46631		WAVERLY,		1950
4.4253		WAVERLY		1931, 32
4.4293		WAVERLY		1926
2.4256		WEIR		1938
1.4543		WELLINGTON,		1938
2.4263		WELLINGTON,		1929, 33, 38, 40
2.4653		WELLINGTON,		1938
2.4644	CON	WELLINGTON	CQ	1932
2.466454		WELLINGTON,		1938
2.6664		WELLINGTON		1938
2.460005		WELLSFORD, / KS		1968
4.4253		WELLSVILLE		1931
1.2513		WESTFALL,		1938, 45
2.46		WESTMORELAND		1929, 31
2.461		WESTMORELAND,		1932
2.463*3		WESTMORELAND	CQ	1908
2.56		WESTPHALIA	CQ	1913
2.4293		WETMORE	CQ	1926
2.46		WETMORE		1923
2.4663		WETMORE,		1926, 31
2.465		WETMORE,		1932
2.46		WHEATON,		1926
2.46		WHITE CITY,		1954
2.4214		WHITE WATER,		1917

2.525		WHITE WATER,		1921, 22
1.1643		WHITING, KS		1959D
1.264301		WICHITA,		1923
2.46		WICHITA, / KS		1968
4.4273		WICHITA		1922, 26, 30A, 31, 32
4.4274		WICHITA	CQ	1922, 26
2.4294		WILSON	CQ	1931
2.46		WILSON	CQ	1929
2.46	CON	WILSON	CQ	1938
2.4664		WILSON,		1917, 26
2.467		WINDOM,		1965
0.46626		WINFIELD	CQ	1917
4.4643		WINFIELD,		1922, 23, 26, 32
7.4543	SLR	WINFIELD		1922, 23, 25, 26
7.45433	SLR	WINFIELD		1917, 22
2.4664		WINONA,		1932, 34
2.4653		WINONA,		1938
2.4663		WOODSTON,		1931, 38
2.68(9/5)		XAVIER		1938, 54
2.460005	CON	YATES CENTER, / KS		1988
1.1644		YODER,		1954
2.46		ZURICH,		1926
2.460005		ZURICH, / KS		1992

VV